

# Schools Active Movement

Supported by



KOBOCA



Happier



Healthier



More Active

## Impact of lockdown report



Teachers indicate that pupils are reporting a range of **concerning physical and emotional issues** after the latest lockdown

In April 2021, the **Schools Active Movement (SAM)** launched a national survey. Headteachers, PE coordinators and PE teachers across England were asked what they had noticed about their pupils since the easing of the third national lockdown in March, when all children had been able to return to school.

## 2,647

**schools** completed the survey during the five days

## 94

**SAM member areas** took part (School Sport Partnership areas)

## 30

**Active Partnership county areas** were represented

**All nine regions** were represented by at least **three Active Partnership areas** and at least **nine SAM Member areas**

Schools taking part by region:

<b>NE</b>	183	<b>EM</b>	293	<b>L</b>	416
<b>NW</b>	626	<b>WM</b>	243	<b>SE</b>	159
<b>Y&amp;H</b>	383	<b>E</b>	136	<b>SW</b>	185

**Schools Active Movement** is a voluntary organisation that supports not-for-profit organisations working with schools across England helping children be happier, healthier and more active. Our members work with 11,900 schools and over 3 million children.



@SchsActiveMment

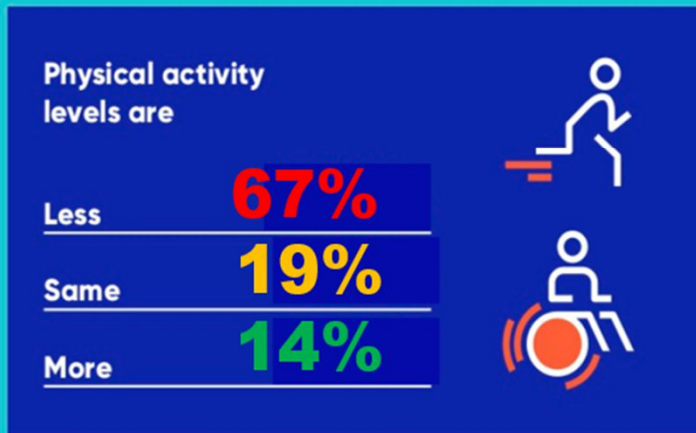
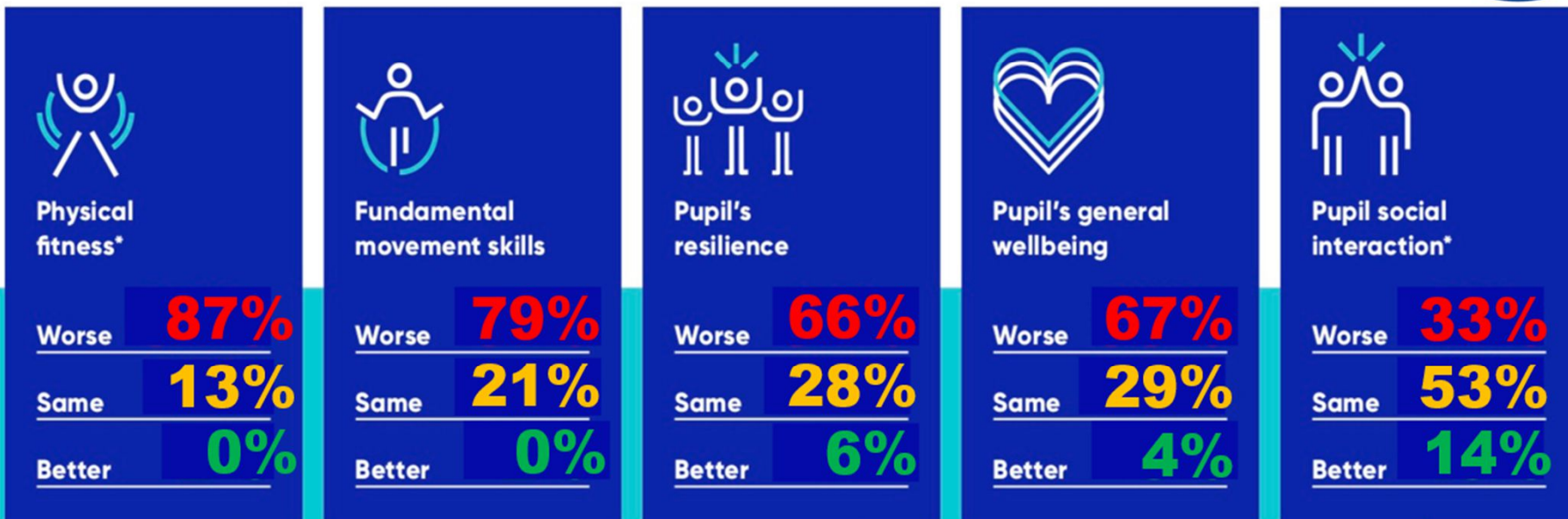


Click here to join the LinkedIn group

# BARNET LOCAL AREA DATA



Teachers have noticed a range of concerning issues since returning to school on 8 March, following the third national lockdown...



To ensure all of the criteria were met, **Schools Active Movement** engaged the **Koboca School Consultation System**, which has a unique way of collecting and presenting the data in real time at a local, regional and national level. It can break down the data into specific filter groups for deeper analysis.